



YAMAHA

USB-MIDI Driver Installation Guide

ATTENTION

SOFTWARE LICENSE AGREEMENT

PLEASE READ THIS SOFTWARE LICENSE AGREEMENT ("AGREEMENT") CAREFULLY BEFORE USING THIS SOFTWARE. YOU ARE ONLY PERMITTED TO USE THIS SOFTWARE PURSUANT TO THE TERMS AND CONDITIONS OF THIS AGREEMENT. THIS AGREEMENT IS BETWEEN YOU (AS AN INDIVIDUAL OR LEGAL ENTITY) AND YAMAHA CORPORATION ("YAMAHA").

BY DOWNLOADING, INSTALLING, COPYING, OR OTHERWISE USING THIS SOFTWARE YOU ARE AGREEING TO BE BOUND BY THE TERMS OF THIS LICENSE. IF YOU DO NOT AGREE WITH THE TERMS, DO NOT DOWNLOAD, INSTALL, COPY, OR OTHERWISE USE THIS SOFTWARE. IF YOU HAVE DOWNLOADED OR INSTALLED THE SOFTWARE AND DO NOT AGREE TO THE TERMS, PROMPTLY DELETE THE SOFTWARE.

1. GRANT OF LICENSE AND COPYRIGHT

Yamaha hereby grants you the right to use one copy of the software program(s) and data ("SOFTWARE") accompanying this Agreement. The term SOFTWARE shall encompass any updates to the accompanying software and data. The SOFTWARE is owned by Yamaha and/or Yamaha's licensor(s), and is protected by relevant copyright laws and all applicable treaty provisions. While you are entitled to claim ownership of the data created with the use of SOFTWARE, the SOFTWARE will continue to be protected under relevant copyrights.

- **You may** use the SOFTWARE on a **single computer**.
- **You may** make one copy of the SOFTWARE in machine-readable form for backup purposes only, if the SOFTWARE is on media where such backup copy is permitted. On the backup copy, you must reproduce Yamaha's copyright notice and any other proprietary legends that were on the original copy of the SOFTWARE.
- **You may** permanently transfer to a third party all your rights in the SOFTWARE, provided that you do not retain any copies and the recipient reads and agrees to the terms of this Agreement.

2. RESTRICTIONS

- **You may not** engage in reverse engineering, disassembly, decompilation or otherwise deriving a source code form of the SOFTWARE by any method whatsoever.
- **You may not** reproduce, modify, change, rent, lease, or distribute the SOFTWARE in whole or in part, or create derivative works of the SOFTWARE.
- **You may not** electronically transmit the SOFTWARE from one computer to another or share the SOFTWARE in a network with other computers.
- **You may not** use the SOFTWARE to distribute illegal data or data that violates public policy.
- **You may not** initiate services based on the use of the SOFTWARE without permission by Yamaha Corporation.

Copyrighted data, including but not limited to MIDI data for songs, obtained by means of the SOFTWARE, are subject to the following restrictions which you must observe.

- Data received by means of the SOFTWARE may not be used for any commercial purposes without permission of the copyright owner.
- Data received by means of the SOFTWARE may not be duplicated, transferred, or distributed, or played back or performed for listeners in public without permission of the copyright owner.
- The encryption of data received by means of the SOFTWARE may not be removed nor may the electronic watermark be modified without permission of the copyright owner.

3. TERMINATION

This Agreement becomes effective on the day that you receive the SOFTWARE and remains effective until terminated. If any copyright law or provisions of this Agreement is violated, the Agreement shall terminate automatically and immediately without notice from Yamaha. Upon such termination, you must immediately destroy the licensed SOFTWARE, any accompanying written documents and all copies thereof.

4. DISCLAIMER OF WARRANTY ON SOFTWARE

You expressly acknowledge and agree that use of the SOFTWARE is at your sole risk. The SOFTWARE and related documentation are provided "AS IS" and without warranty of any kind. NOTWITHSTANDING ANY OTHER PROVISION OF THIS AGREEMENT, YAMAHA EXPRESSLY DISCLAIMS ALL WARRANTIES AS TO THE SOFTWARE, EXPRESS, AND IMPLIED, INCLUDING BUT NOT LIMITED TO THE IMPLIED WARRANTIES OF MERCHANTABILITY, FITNESS FOR A PARTICULAR PURPOSE AND NON-INFRINGEMENT OF THIRD PARTY RIGHTS. SPECIFICALLY, BUT WITHOUT LIMITING THE FOREGOING, YAMAHA DOES NOT WARRANT THAT THE SOFTWARE WILL MEET YOUR REQUIREMENTS, THAT THE OPERATION OF THE SOFTWARE WILL BE UNINTERRUPTED OR ERROR-FREE, OR THAT DEFECTS IN THE SOFTWARE WILL BE CORRECTED.

5. LIMITATION OF LIABILITY

YAMAHA'S ENTIRE OBLIGATION HEREUNDER SHALL BE TO PERMIT USE OF THE SOFTWARE UNDER THE TERMS HEREOF. IN NO EVENT SHALL YAMAHA BE LIABLE TO YOU OR ANY OTHER PERSON FOR ANY DAMAGES, INCLUDING, WITHOUT LIMITATION, ANY DIRECT, INDIRECT, INCIDENTAL OR CONSEQUENTIAL DAMAGES, EXPENSES, LOST PROFITS, LOST DATA OR OTHER DAMAGES ARISING OUT OF THE USE, MISUSE OR INABILITY TO USE THE SOFTWARE, EVEN IF YAMAHA OR AN AUTHORIZED DEALER HAS BEEN ADVISED OF THE POSSIBILITY OF SUCH DAMAGES. In no event shall Yamaha's total liability to you for all damages, losses and causes of action (whether in contract, tort or otherwise) exceed the amount paid for the SOFTWARE.

6. THIRD PARTY SOFTWARE

Third party software and data ("THIRD PARTY SOFTWARE") may be attached to the SOFTWARE. If, in the written materials or the electronic data accompanying the Software, Yamaha identifies any software and data as THIRD PARTY SOFTWARE, you acknowledge and agree that you must abide by the provisions of any Agreement provided with the THIRD PARTY SOFTWARE and that the party providing the THIRD PARTY SOFTWARE is responsible for any warranty or liability related to or arising from the THIRD PARTY SOFTWARE. Yamaha is not responsible in any way for the THIRD PARTY SOFTWARE or your use thereof.

- Yamaha provides no express warranties as to the THIRD PARTY SOFTWARE. IN ADDITION, YAMAHA EXPRESSLY DISCLAIMS ALL IMPLIED WARRANTIES, INCLUDING BUT NOT LIMITED TO THE IMPLIED WARRANTIES OF MERCHANTABILITY AND FITNESS FOR A PARTICULAR PURPOSE, as to the THIRD PARTY SOFTWARE.
- Yamaha shall not provide you with any service or maintenance as to the THIRD PARTY SOFTWARE.
- Yamaha is not liable to you or any other person for any damages, including, without limitation, any direct, indirect, incidental or consequential damages, expenses, lost profits, lost data or other damages arising out of the use, misuse or inability to use the THIRD PARTY SOFTWARE.

7. GENERAL

This Agreement shall be interpreted according to and governed by Japanese law without reference to principles of conflict of laws. Any dispute or procedure shall be heard before the Tokyo District Court in Japan. If for any reason a court of competent jurisdiction finds any portion of this Agreement to be unenforceable, the remainder of this Agreement shall continue in full force and effect.

8. COMPLETE AGREEMENT

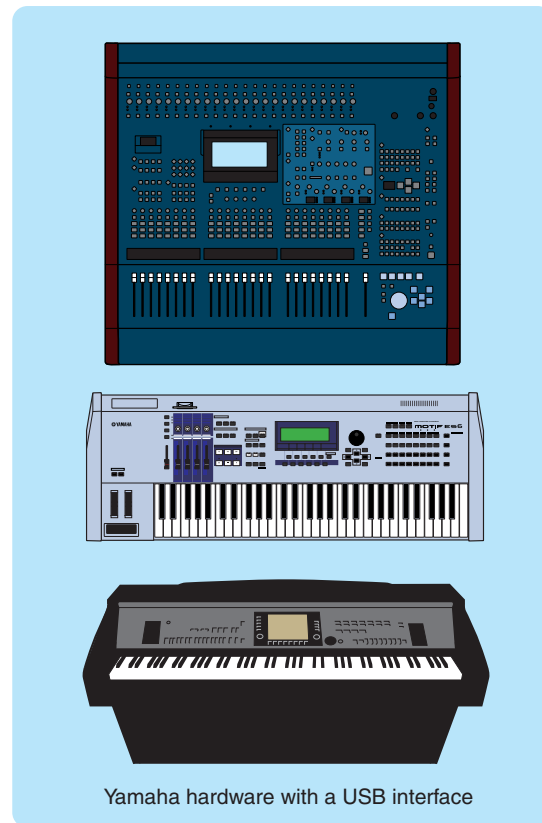
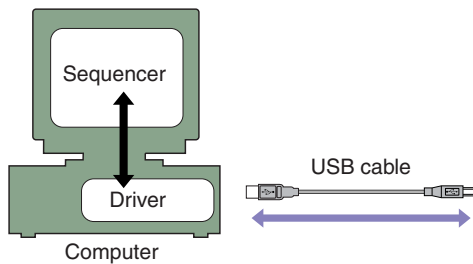
This Agreement constitutes the entire agreement between the parties with respect to use of the SOFTWARE and any accompanying written materials and supersedes all prior or contemporaneous understandings or agreements, written or oral, regarding the subject matter of this Agreement. No amendment or revision of this Agreement will be binding unless in writing and signed by a fully authorized representative of Yamaha.

Special Notices

- The software and this manual are the exclusive copyrights of Yamaha Corporation.
- Please read carefully the Software Licensing Agreement at the front of this manual before installing the software.
- Copying of the software or reproduction of this manual in whole or in part by any means is expressly forbidden without the written consent of the manufacturer.
- Yamaha makes no representations or warranties with regard to the use of the software and documentation and cannot be held responsible for the results of the use of this manual and the software.
- Future upgrades of application and system software and any changes in specifications and functions will be announced at the following website: http://www.global.yamaha.com/download/usb_midi/
For ProAudio products, please refer to the following website:
<http://www.yamahaproaudio.com/downloads/>
- The screen displays as illustrated in this manual are for instructional purposes, and may appear somewhat different from the screens which appear on your computer.
- Copying of the commercially available musical data including but not limited to MIDI data and/or audio data is strictly prohibited except for your personal use.
- Windows is the registered trademark of Microsoft® Corporation.
- Apple and Macintosh are trademarks of Apple, Inc., registered in the U.S. and other countries.
- The company names and product names in this manual are the trademarks or registered trademarks of their respective companies.

USB-MIDI Driver

To operate your Yamaha hardware from your computer via USB, you'll need to install the USB-MIDI driver software. The USB-MIDI driver is software that transfers MIDI data back and forth between your music software and the instrument via a USB cable.



Precautions when using the USB TO HOST connector

When connecting the computer to the USB TO HOST connector, make sure to observe the following points. Failing to do so risks freezing the computer and corrupting or even losing the data. If the computer or the instrument freezes, turn the power to the instrument off or restart the computer.

- ⚠ CAUTION**
- Before connecting the computer to the USB TO HOST connector, exit from any power-saving mode (such as suspended, sleep, standby) of the computer.
 - Before turning on the power to the instrument, connect the computer to the USB TO HOST connector.
 - Execute the following before turning the power to the instrument on/off or plugging/unplugging the USB cable to/from the USB TO HOST connector.
 - Quit any open applications.
 - Make sure that data is not being transmitted from the instrument. (Data is transmitted only by playing notes on the keyboard or playing back a song.)
 - While a USB device is connected to the instrument, you should wait for six seconds or more between these operations: (1) when turning the power of the instrument off then on again, or (2) when alternately connecting/disconnecting the USB cable.

Minimum System Requirements

Windows

OS	Windows XP Professional (SP2/SP3)/XP Home Edition (SP2/SP3)/2000 (SP4)/Me/98
Computer	166 MHz or higher; Intel Pentium/Celeron processor
Available Memory	32 MB or more (64 MB or more is recommended)
Hard Disk	Windows XP/2000: 3MB or more Windows Me/98: 2MB or more

OS	Windows XP Professional x64 Edition (SP2)
Computer	Intel 64 compatible processor
Available Memory	256MB or more
Hard Disk	3MB or more

OS	Windows Vista (SP0/SP1)
Computer	800MHz or higher; Intel Pentium/Celeron processor or Intel 64 compatible processor
Available Memory	512MB or more
Hard Disk	3MB or more

Macintosh

OS	Mac OS X 10.2.8 – 10.5.x
Computer	Macintosh computer and a USB port with a Power Mac G3 or higher, or using Intel Processor
Available Memory	128 MB or more
Hard Disk	2 MB or more

NOTE Keep in mind that the software is often updated and the system requirements are subject to change. You can check the latest version information of each software and its system requirements at the following website.

http://www.global.yamaha.com/download/usb_midi/

For ProAudio products, please refer to the following website:

<http://www.yamahaproaudio.com/downloads/>

The system requirements may differ slightly depending on the particular computer.

Installing the Software

The actual installation steps and the use of the software itself differs depending on the operating system that you are using. Please refer to the appropriate installation instructions.

Procedures	Windows	Macintosh
When installing the USB-MIDI driver for the first time	page 5	page 16
When updating (upgrading) the USB-MIDI driver	page 12	page 16
When the driver cannot be installed	page 18	

NOTE A program that can be used to remove the Windows 2000/XP/XP x64/Vista USB-MIDI driver from your computer is included in the downloaded compressed file. Refer to “USB-MIDI Driver Uninstall Program (Windows 2000/XP/XP x64/Vista)” on [page 15](#).

USB-MIDI Driver Installation (for Windows)

This section shows you how to install the USB-MIDI driver for the first time. For instructions on updating the driver to the latest version, see [page 12](#).

When using several MIDI instruments at the same time

If you are using several MIDI instruments with USB connection at the same time, disconnect all the instruments from the computer and perform the following installation procedure separately for each instrument you intend to use.

Windows 98/Me

- 1 Disconnect all USB devices from the computer except for the mouse and computer keyboard.
Close all applications and windows that are open.
- 2 Turn off the power of the instrument.
- 3 Connect the USB connector of the computer to the USB TO HOST connector of the MIDI instrument with a standard USB cable.
If your instrument has a HOST SELECT switch, set the switch to “USB.”
NOTE Do not use a USB hub for connecting multiple USB devices.
- 4 Turn on the power of the instrument.
- 5 Make sure that the “Add New Hardware Wizard” window is displayed.

NOTE On some computers, it may take a few minutes before this screen appears.

Windows 98

Click [Next]. A dialog for selecting the search method is displayed.

Check the radio button to the left of “Search for the best driver for your device (Recommended).” Click [Next].

NOTE When updating the driver, check “Search for a better driver than the one your device is using now (Recommended).”



Windows Me

Check the radio button to the left of “Specify the location of the driver (Advanced).” Click [Next].



6 Specify the location in which to search the driver.

Check “Specify a location” only. Click [Browse].

Select the “Driver” folder from the downloaded files and click [OK].

Windows 98



Windows Me



7 When the “Add New Hardware Wizard” window is displayed again, click [Next].

8 Make sure that “YAMAHA USB MIDI Driver” is shown in the window and click [Next].

Installation is started automatically.

9 When a message appears indicating that the driver has been successfully installed, click “Finish.”

NOTE On some computers, it may take a few minutes before this screen appears.

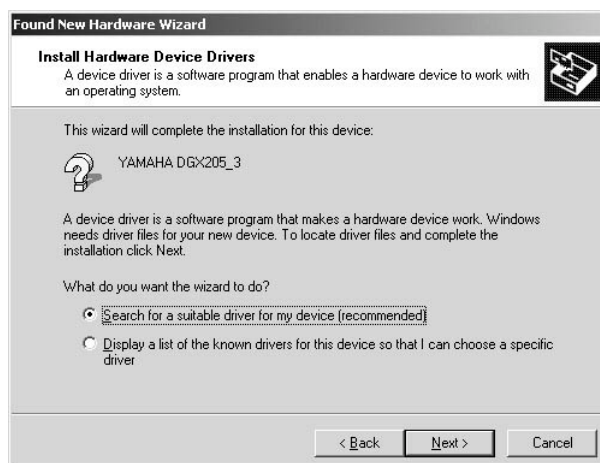
Windows 2000/XP/XP x64

- 1 Disconnect all USB devices from the computer except for the mouse and computer keyboard.
- 2 Start the computer and use the “Administrator” account to log on Windows.
Close all applications and windows that are open.
- 3 Turn off the power of the instrument.
- 4 Connect the USB connector of the computer to the USB TO HOST connector of the MIDI instrument with a standard USB cable.
If your instrument has a HOST SELECT switch, set the switch to “USB.”
NOTE Do not use a USB hub for connecting multiple USB devices.
- 5 Turn on the power of the instrument.
- 6 Make sure that the “Found New Hardware Wizard” window is displayed.
NOTE On some computers, it may take a few minutes before this screen appears.

Windows 2000

Click [Next]. A dialog for selecting the search method is displayed.

Check the radio button to the left of “Search for a suitable driver for my device (recommended).” Click [Next].



Windows XP/XP x64

NOTE When using Windows XP SP2/XP x64

If a message appears prompting you to connect to Windows Update, select “No, not this time” and click [Next].

Check the radio button to the left of “Install from a list or specific location (Advanced).” Click [Next].



7 Specify the location to search the driver.

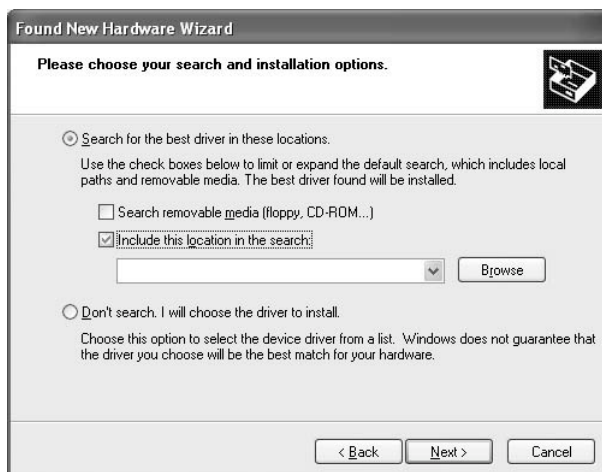
Windows 2000

Check “Specify a location” only. Click [Next]. When the window to select the driver location displays, click [Browse].



Windows XP/XP x64

Check “Include this location in the search” only. Click [Browse].



8 Select the “Driver” folder from the downloaded files and click [OK].

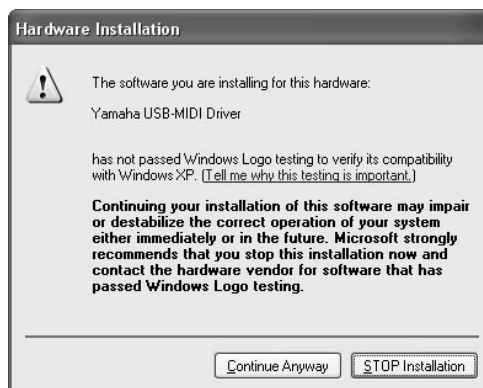
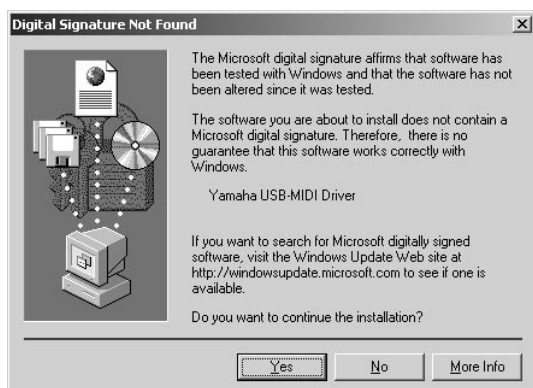
Windows 2000

When a message appears indicating that the driver search has been finished, click [Next] to start installation.

Windows XP/XP x64

Click [Next] to start installation.

If the warning message below appears during the installation, click [Yes] or [Continue Anyway].



- 9 When a message appears indicating that the driver has been successfully installed, click [Finish].

NOTE On some computers, it may take a few minutes before this screen appears.

- 10 When a window appears prompting you to restart the computer, do so.

Restart the computer by following the on-screen directions.

NOTE This display will not appear when using Windows XP x64. No restart is necessary.

Windows Vista

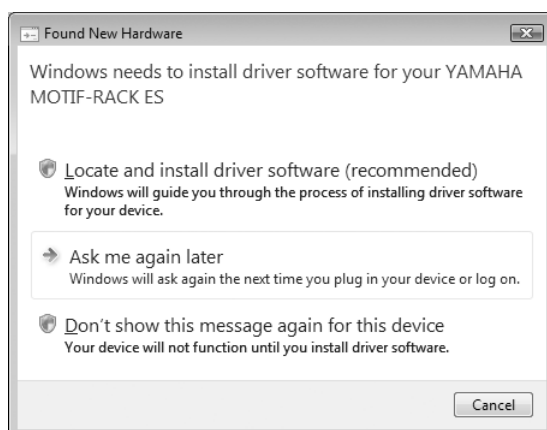
- 1 Disconnect all USB devices from the computer except for the mouse and computer keyboard.
- 2 Start the computer and use the “Administrator” account to log on Windows.
Close all applications and windows that are open.
- 3 Turn off the power of the instrument.
- 4 Connect the USB connector of the computer to the USB TO HOST connector of the MIDI instrument with a standard USB cable.
If your instrument has a HOST SELECT switch, set the switch to “USB.”

NOTE Do not use a USB hub for connecting multiple USB devices.

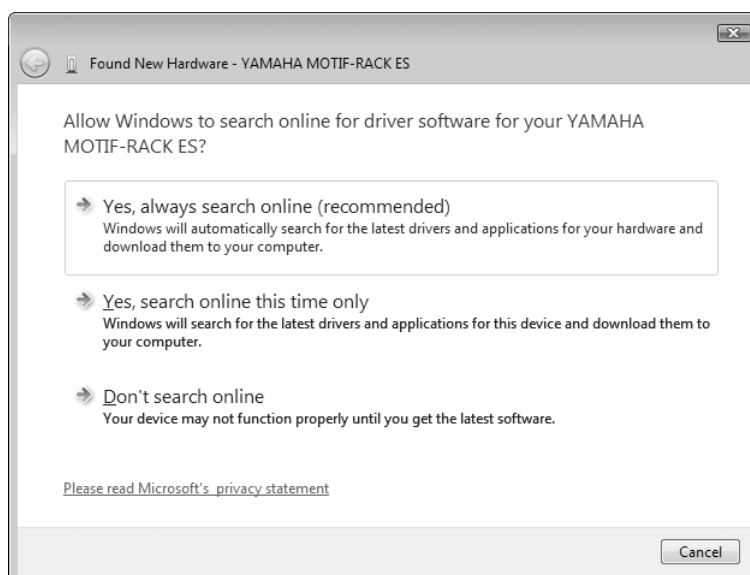
- 5 Turn on the power of the instrument.
- 6 After confirming that the “Found New Hardware” window appears, click “Locate and install driver software (recommended).”

NOTE On some computers, it may take a few minutes before this screen appears.

NOTE If the “User Account Control” window appears after clicking “Locate and install driver software (recommended),” click [Continue].

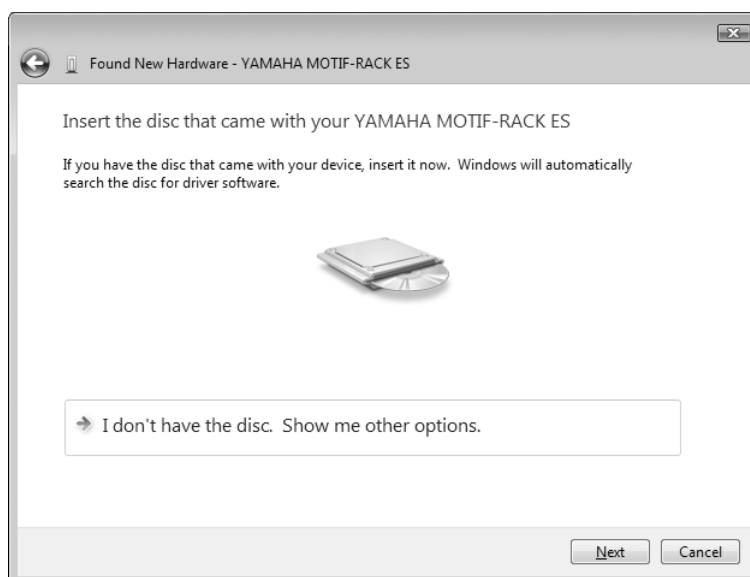


7 Click “Don’t search online.”

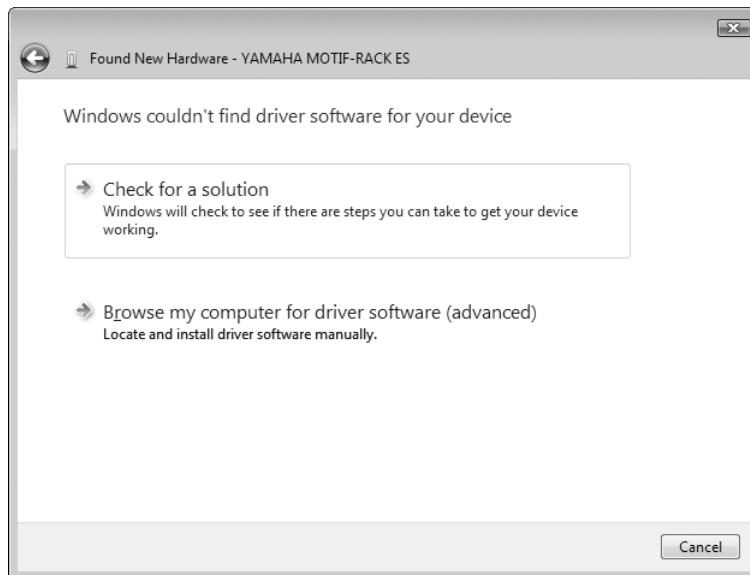


8 Click “I don’t have the disc. Show me other options” if the message prompting you to insert the disc that came with your instrument appears.

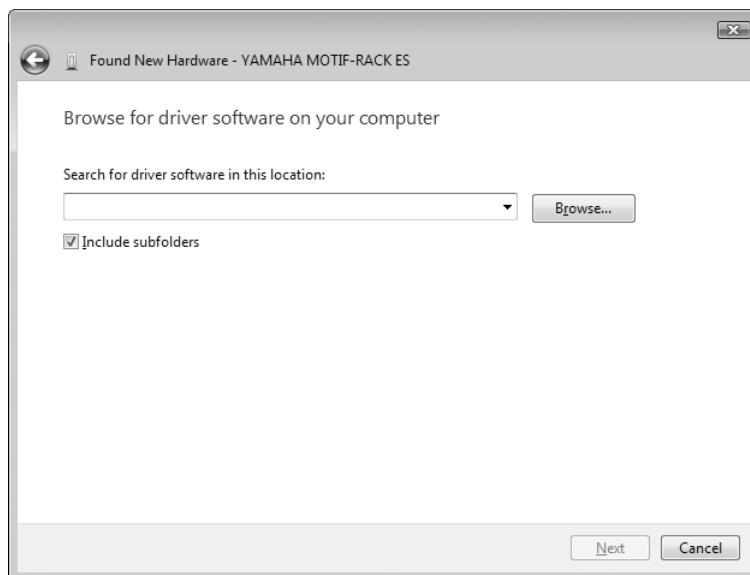
NOTE Depending on the connected instrument, this message may not appear.



9 Click “Browse my computer for driver software (advanced).”



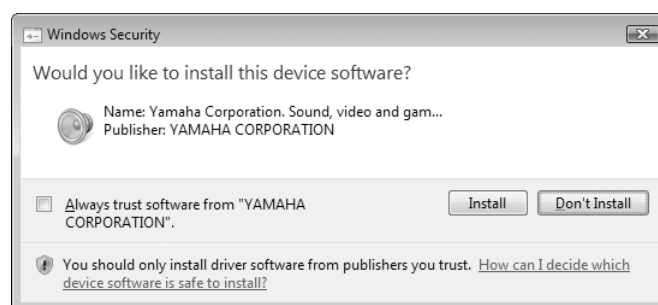
10 Click [Browse] to specify the search location.



11 Specify the file location then start installation.

Call up the path to which the downloaded file has been extracted, open the “Driver” folder, click [OK] to return to the original window, then click [Next] to start installation.

NOTE Depending on the setting of your computer, the alert message below may appear during the installation process for security purposes. Confirm this software is authored by Yamaha Corporation then click [Install].



12 When a message appears indicating that the driver has been successfully installed, click [Finish].

NOTE On some computers, it may take a few minutes before this screen appears.

USB-MIDI Driver Update (For Windows)

This section shows you how to update the USB-MIDI driver from the previous version. For instructions on installing the driver for the first time, see [page 5](#).

When using several MIDI instruments at the same time

If you are using several MIDI instruments with USB connection at the same time, disconnect all the instruments from the computer and perform the following installation procedure separately for each instrument you intend to use.

Windows 98/Me

- 1 Disconnect all USB devices from the computer except for the mouse and computer keyboard.
Close all applications and windows that are open.
- 2 Turn off the power of the instrument.
- 3 Connect the USB connector of the computer to the USB TO HOST connector of the MIDI instrument with a standard USB cable.
If your instrument has a HOST SELECT switch, set the switch to "USB."
NOTE Do not use a USB hub for connecting multiple USB devices.
- 4 Turn on the power of the instrument.
- 5 Open the "Control Panel" from "My Computer" and double-click the "System" icon.
- 6 Select the "Device Manager" tab.
- 7 Click the [+] button to the left of "Sound, video and game controllers" and double-click on "YAMAHA USB MIDI Driver."
The "YAMAHA USB MIDI Driver Properties" window appears.
- 8 Select the "Driver" tab and click [Update Driver].
Click [Next].
- 9 After "Update Device Driver Wizard" appears, execute the same operations as in steps 5 - 9 on [page 5](#).

NOTE The window names may differ from those in steps 5 – 9 described on [page 5](#). However, the basic operation is the same.

NOTE A dialog box may appear indicating that the "xgusb.drv" or "ymidusb.sys" file are not found. In this case, select the "Driver" folder from the downloaded files as the destination.

Confirmation after Update

- 1 Connect the instrument to the computer and turn on the power of the instrument.
- 2 Open the "Control Panel" and double-click the "MIDI-USB Driver" icon.
- 3 Confirm the version number in the lower left of the window.

Windows 2000/XP/XP x64

- 1 Disconnect all USB devices from the computer except for the mouse and computer keyboard.
- 2 Start the computer and use the “Administrator” account to log on Windows.
Close all applications and windows that are open.
- 3 Turn off the power of the instrument.
- 4 Connect the USB connector of the computer to the USB TO HOST connector of the MIDI instrument with a standard USB cable.
If your instrument has a HOST SELECT switch, set the switch to “USB.”
NOTE Do not use a USB hub for connecting multiple USB devices.
- 5 Turn on the power of the instrument.
- 6 Open the “Control Panel” from “My Computer” and double-click the “System” icon.
If the “System” icon is not shown, click on “Switch to Classic View” in the left of the window.
- 7 Select [Device Manager] from the “Hardware” tab.
- 8 Click the [+] button to the left of “Sound, video and game controllers” and double-click on “Yamaha USB-MIDI Driver.”
The “Yamaha USB-MIDI Driver Properties” window appears.
NOTE When using Windows XP x64, double-click on “Yamaha USB-MIDI Driver (WDM)” to open the Yamaha USB-MIDI Driver (WDM) properties window.
- 9 Select the “Driver” tab and click [Update Driver].
Click [Next].
- 10 After “Update Device Driver Wizard” appears, execute the same operations as in steps 6 - 10 described on [page 7](#).

NOTE The window names may differ from those in steps 6 – 10 described on [page 7](#). However, the basic operation is the same.

Confirmation after Update

- 1 Connect the instrument to the computer and turn on the power of the instrument.
- 2 Open the “Control Panel” and double-click the “Yamaha USB-MIDI Driver” icon.
NOTE When using Windows XP x64, double-click the “Yamaha USB-MIDI Driver (WDM)” icon.
- 3 Confirm the version number in the lower left of the window.

Windows Vista

- 1** Disconnect all USB devices from the computer except for the mouse and computer keyboard.
- 2** Start the computer and use the “Administrator” account to log on Windows.
Close all applications and windows that are open.
- 3** Turn off the power of the instrument.
- 4** Connect the USB connector of the computer to the USB TO HOST connector of the MIDI instrument with a standard USB cable
If your instrument has a HOST SELECT switch, set the switch to “USB.”
NOTE Do not use a USB hub for connecting multiple USB devices.
- 5** Turn on the power of the instrument.
- 6** Open the “Control Panel” from “Start” menu and double-click the “Device Manager” icon.
If the “Device Manager” icon is not shown, click on “Classic View” in the left of the window.
NOTE If the “User Account Control” window appears, click [Continue].
- 7** Click the [+] button to the left of “Sound, video and game controllers” and double-click on “Yamaha USB-MIDI Driver (WDM).”
The “Yamaha USB-MIDI Driver (WDM) Properties” window appears.
- 8** Select the “Driver” tab and click [Update Driver].
- 9** After “Update Driver Software” appears, execute the same operations as in step 9 – 12 described on [page 11](#).
NOTE Even though the operations here are basically the same as those in steps 9 – 12 on [page 11](#), some of the window names may be different.

Confirmation after Update

- 1** Connect the instrument to the computer and turn on the power of the instrument.
- 2** Open the “Control Panel” and double-click the “Yamaha USB-MIDI Driver (WDM)” icon.
- 3** Confirm the version number in the lower left of the window.

USB-MIDI Driver Uninstall Program (Windows 2000/XP/XP x64/Vista)

This program, included in the downloaded compressed file, can be used to completely remove the Windows 2000/XP/XP x64/Vista USB-MIDI driver from your computer.

To uninstall the Windows 2000/XP/XP x64/Vista USB-MIDI driver from your computer, follow the procedure outlined below.

1 Disconnect all USB devices from the computer except for the mouse and computer keyboard.

2 Start the computer and use the “Administrator” account to log on Windows.

Close all applications and windows that are open.

3 Open the decompressed “Uninstall” folder, and double-click the “uninstall.exe” file.

Follow the on-screen instructions to uninstall the driver.

NOTE When using a 64-bit OS, click “uninstall_x64.exe.”

NOTE If the “User Account Control” window appears, click [Continue].

4 A message asking you to restart your computer in order to complete the uninstall procedure will appear. Driver removal will be complete when you have restarted your computer.

USB-MIDI Driver Installation and Upgrade (for Macintosh)

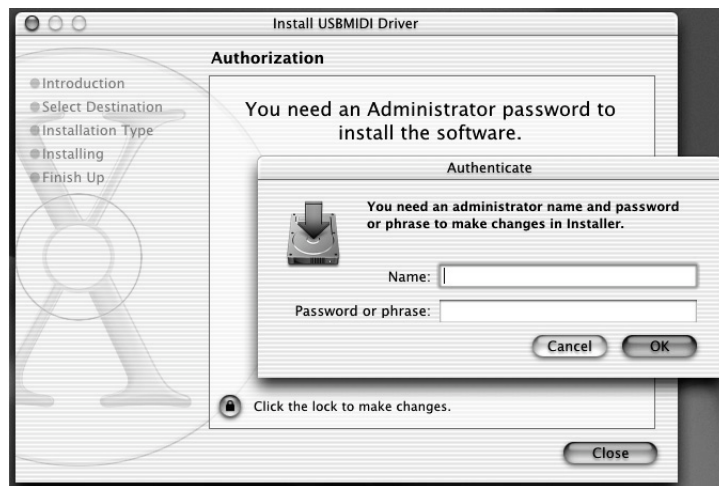
Mac OS X

The displayed windows may differ depending on the particular OS version.

- 1 Disconnect all USB devices from the computer except for the mouse and computer keyboard.
- 2 Start your computer, then log in as Administrator.
To confirm that the Administrator account is available, select [System Preferences], then [Account (Users)].
- 3 Extract the data from the downloaded compressed file.
- 4 Double-click on “YAMAHA USB-MIDI v***.mpkg.”

*** represents the version number.

NOTE Depending on your computer OS, the window below (or one similar to it) will be displayed. Clicking on the lock icon calls up the “Authenticate” window, prompting you to enter a password. Enter the password for the Administrator's account. If you have not set the password, click [OK] without entering the password.



- 5 The “Welcome to the USB-MIDI Driver Installer” window is displayed. Click [Continue].



Follow the on-screen instructions to install or upgrade the software.

NOTE Depending on your computer OS, the "Authenticate" window (or one similar to it) will be displayed, prompting you to enter a password. Enter the password for the Administrator's account.
If you have not set the password, click [OK] without entering the password.

NOTE A message indicating that the installation requires 100MB of disk space may appear. However, the actual required free disk space is specified in the system requirements on [page 4](#).

6 When installation is completed, a window appears indicating that the software has been successfully installed or upgraded.

You can check the following locations to confirm that the driver has been installed:

- Library → Audio → MIDI Drivers → YAMAHA-USBMIDIPlugin.plugin
- Library → PreferencePanels → YAMAHA-USBMIDIPatch.prefPane

Uninstall and Re-install

When you delete the following files, the driver will be removed.

After removing the driver, restart the computer and re-install the driver.

- User → Your user folder → Library → Preferences → jp.co.yamaha.USBMIDIDriver.plist (This file is created after the driver is loaded.)
- Library → Audio → MIDI Driver → YAMAHAUSBMIDIDriver.plugin
- Library → PreferencePanels → YAMAHAUSBMIDIPatch.prefPane
- Library → Receipts → YAMAHA-USBMIDIDriver.pkg
- Library → Receipts → YAMAHA-USBMIDIPatch.pkg

If the following file exists in MAC OS X Version 10.2.8, you will need to delete the file (after closing System Preference).

- User → Your user folder → Library → Caches → com.apple.preferencepanes.cache

NOTE Only Admin can delete the driver. Most users are not authorized to delete the driver.

Troubleshooting

The driver cannot be installed.

- Is the USB cable connected correctly?

Disconnect the USB cable, then connect it again.

- Is the USB function enabled on your computer? (in Windows)

When you connect the instrument to the computer for the first time, if the “Add (Found) New Hardware Wizard” or the “Found New Hardware” window does not appear, the USB function on the computer may be disabled. Perform the following steps.

- 1 Select [Control Panel] → [System] → [Hardware] → [Device Manager]

NOTE When using Windows Vista, select [Control Panel] → [Device Manager].

- 2 Make sure that no “!” or “x” marks appear at “Universal serial bus controller” or “USB Root Hub.”

If you see an “!” or “x” mark, the USB controller is disabled. For details, refer to the owner's manual for your computer.

- Is any unknown device registered? (in Windows)

If driver installation fails, the instrument will be marked as an “Unknown device,” and you will not be able to install the driver. Delete the “Unknown device” by following the steps below.

- 1 Select [Control Panel] → [System] → [Hardware] → [Device Manager].

NOTE When using Windows Vista, select [Control Panel] → [Device Manager].

- 2 Look for “Other devices” in the menu “View devices by type.”

- 3 If you find “Other devices,” double-click it to extend the tree to look for “Unknown device.” If one appears, select it and click the [Remove] button.

- 4 Remove the USB cable from the instrument, and make the connection again.

- 5 Install the driver again. See [page 5](#), [page 7](#) or [page 9](#).